



Start-up valve

Size 1

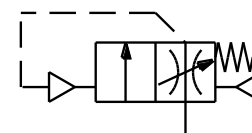
FU 931

FU 932

G 1/4

G 3/8

2.5 to 16 bar



Description

Start-up valve (filling valve) for a **delayed build-up of pressure** in pneumatic systems. The **delay time** can be **altered** by turning the adjusting screw on the top.

If a pneumatic system is pressurised after it has come to a standstill, undesirable pressure surges may occur that could significantly impair the service life of the components. Connected actuators are likely to be operated in an uncontrolled way, leading to a high hazard potential.

Characteristics

Type	FU 931	FU 932
Port (thread)	G 1/4	G 3/8
Type of construction Start-up valve	Seat valve, pneumatically operated by secondary pressure	
Medium	Compressed air, neutral gases	
Mounting position	Interconnected devices vertical / single devices any	
Temperature Medium / ambient	Max. 50°C	
Input pressure Pin	Pin min. 2.5 bar Pin max. 16 bar	
Output pressure	50% input pressure (closed systems only)	
Nominal flow Qn	2000 l/min (Pin 6 bar, Δp = 1 bar)	
Mounting type	Bracket, wall mounting	

Materials

Part	Material:
Head piece	PA66 GF60
Cover	Schulaform®
Adjusting screw	Brass
Piston	Brass / NBR
Valve cone	Brass / NBR
Valve tappet	PA 6
Counter-pressure spring	Stainless steel
O-ring 32 x 2.5	NBR
Threaded plate	Die-cast zinc

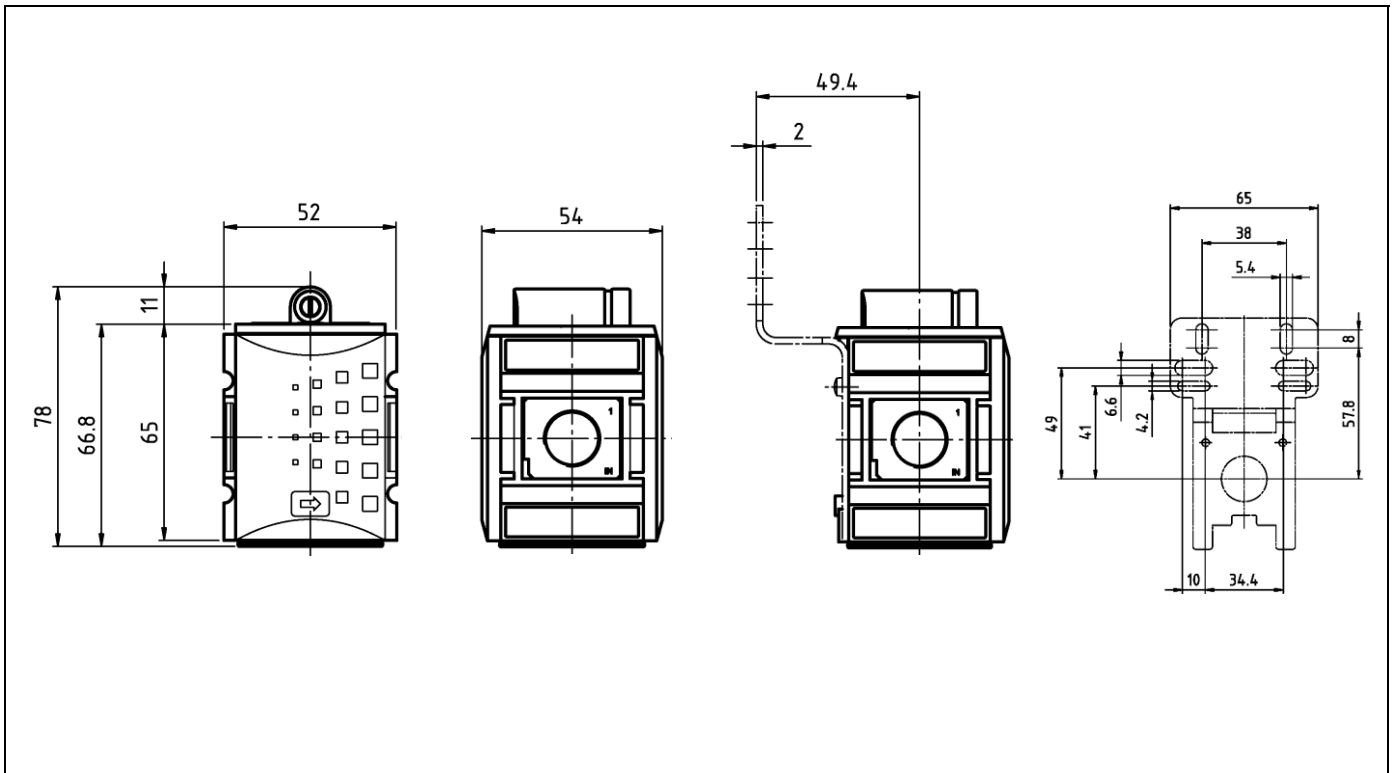
Ordering information

- The valves are delivered in single packs

Accessories

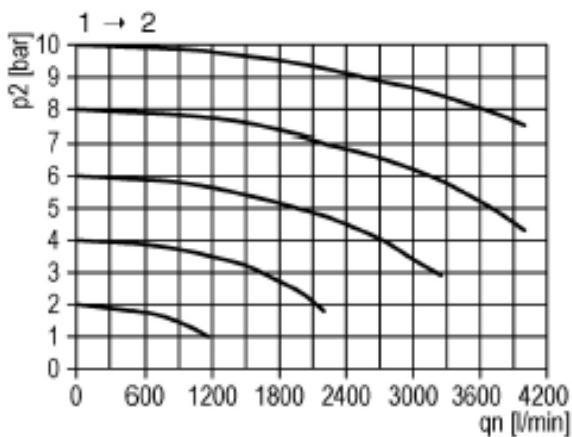
Designation	Art. No.
Mounting bracket, incl. screws	H 850
Wall bracket, incl. screws	WK 100
Joiner set, incl. screws	KP 100
Wall bracket with connection thread G 1/4	WK 101-14
Wall bracket with connection thread G 3/8	WK 101-38

Dimensions



Flow rates

Flow characteristic



Filling characteristic

