

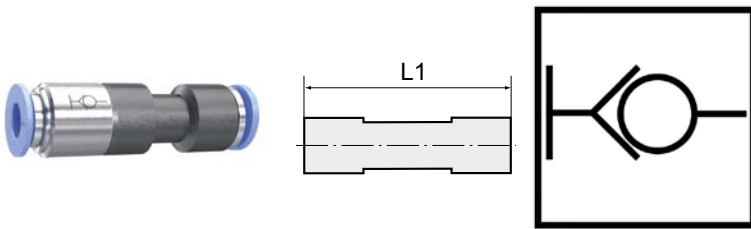
Stopper valve, straight push-in connector

»blue series«

EASY

Art. No. 151485

Type No. 199.04-2



Exemplary illustration

Functional principle of a coupling: The compressed air supply is completely shut off as soon as the hose is detached from the connector.

Flow is only guaranteed when the hose is firmly inserted.

Attention: Only release the hose without pressure and hold the end of the hose to the plug connection when loosening to prevent injuries from the "whip effect".

Technical data

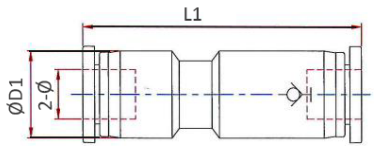
Working pressure	0 - 10 bar
Temperature range	0 to 60 °C
Series	Blue series
Material	Plastic and nickel-plated brass
Medium	Compressed air
Sealant	NBR
Sleeve	Plastic blue
Applications	Compressed air systems
Recommended hose	PU or PA (nylon)
For tube O.D.	4 mm
L1	46.0 mm

The suitability test for the use with alternative specifications is the user's responsibility.

Commercial data

Customs tariff number	39174000
Country of origin	CN
eCl@ss 5.1.4	27294201
eCl@ss 9.0	27294201
UNSPSC_Code_v190501	27131613
UNSPSC_CodeDesc_v190501	Air coupling

Dimensions



For tube O.D.	L1	D1
mm	mm	mm
4	46.0	10.5