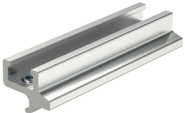


# Sensor adapter

ZRL1 series

Art. No. 129668

Type No. SA.ZRL1



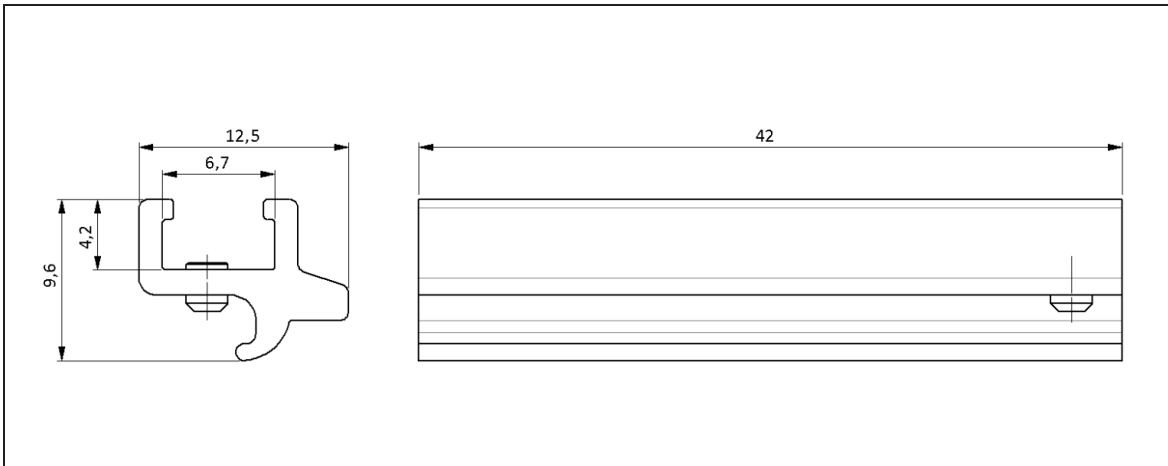
Exemplary illustration

## Technical data

For cylinders	ZRL1C, ZRL1F, ZRL1S
Material	Aluminium
Description	For mounting the sensor on the cylinder

## Commercial data

Customs tariff number	76169990
Country of origin	DE
eCl@ss 5.1.4	27299205
eCl@ss 9.0	27299205
UNSPSC_Code_v190501	40141616
UNSPSC_CodeDesc_v190501	Valve parts or accessories

**Sensor adapter for ZRL1C, ZRL1F, ZRL1S**


Art. No.	Type No.	Material	Description
129668	SA.ZRL1	Aluminium	for mounting the sensor on the cylinder



SA.ZRL1

Note: For series ZRL1C, ZRL1F and ZRL1S, the sensor adapter is only necessary for  $\varnothing 16$  and  $\varnothing 25$ .