

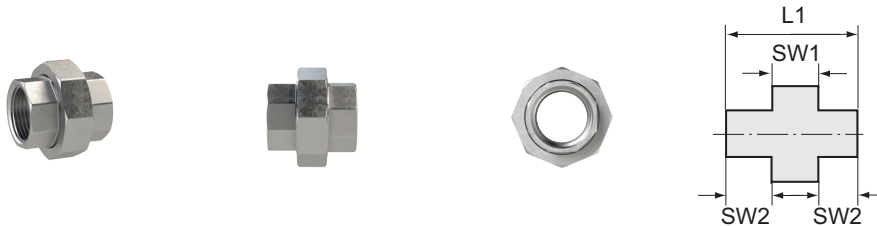
Removable double threaded nipple

Stainless steel 1.4408

STAINLESS STEEL

Art. No. 118059

Type No. LDG NR14ES4408FDII



Exemplary illustration

Technical data

Max. working pressure	20 bar
Sealant	Flat sealing PTFE
Thread	Rp 1/4
L1	32.0 mm
a/f 1	30 mm
a/f 2	18 mm
Thread form	parallel female thread
Standard thread	DIN EN ISO 7-1

From thread size of 1 inch, we recommend using an adjustable open-end wrench.

To ensure a proper sealing of the cylindrical threads (G) and tapered threads (R/Rp) we recommend using a suitable sealant (e.g. hemp, sealing tape or suitable industrial adhesive).

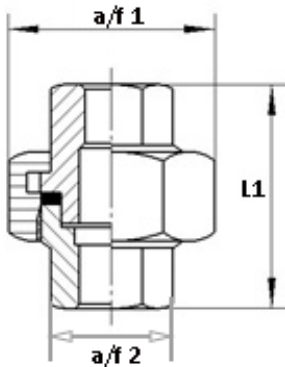
Commercial data

Customs tariff number	73072910
Country of origin	CN
eCl@ss 5.1.4	22360606
eCl@ss 9.0	22560206
UNSPSC_Code_v190501	40173303
UNSPSC_CodeDesc_v190501	Stainless steel pipe nipple

Material informations

REACH SVHC1 substance name	no
CAS no. SVHC 1	no CAS No.
RoHS materials notice	RoHS compliant
REACH Info	no SVHC substance included

Dimensions



Thread	L1 mm	a/f 1 mm	a/f 2 mm
Rp 1/4	32.0	30	18

From thread size of 1 inch, we recommend using an adjustable open-end wrench.

To ensure a proper sealing of the cylindrical threads (G) and tapered threads (R/Rp) we recommend using a suitable sealant (e.g. hemp, sealing tape or suitable industrial adhesive).

Spareparts

	Art. No.	Type No.
Flat seal made of PTFE size 1	119411	FDT1