

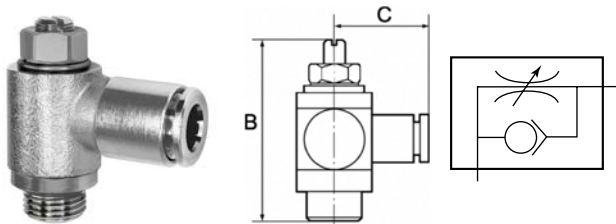
Throttle check valve

adjustable with slotted-head screwdriver

PLUS

Art. No. 115705

Type No. 343.018-6-D



Exemplary illustration

For throttling flow rates and regulating the piston speed of cylinders. Small dimensions, ideal for tight spaces. To be screwed directly into the valve or cylinder. The set flow rate can be locked via the lock nut in the version with knurled screw. The variants in banjo bolt construction can be rotated during assembly and are fixed after tightening. The variants with plug-in connector, rotated can also be rotated freely after assembly. The seals and lubricants used are silicone-free.

Technical data

| | |
|--------------------|------------------------|
| Operating pressure | 0 - 10 bar |
| Temperature range | -20 to 80 °C |
| Body | Nickel-plated brass |
| Sealant | NBR |
| Silicone-free | Yes |
| Function | Discharge throttle (C) |
| Type of connection | Plug-in connector |
| Design | rotating |
| Thread | G 1/8 |
| For hose | 6 mm |
| a/f | 9 mm |
| B | 31.8 mm |
| C | 22.5 mm |

Commercial data

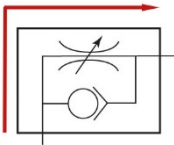
| | |
|-------------------------|------------------|
| Customs tariff number | 84812090 |
| Country of origin | IT |
| eCl@ss 5.1.4 | 27292203 |
| eCl@ss 9.0 | 27292203 |
| UNSPSC_Code_v190501 | 40141603 |
| UNSPSC_CodeDesc_v190501 | Pneumatic valves |

Material informations

| | |
|----------------------------|-------------------------|
| REACH SVHC1 substance name | lead |
| CAS no. SVHC 1 | 7439-92-1 |
| RoHS materials notice | RoHS compliant |
| REACH Info | contains SVHC substance |

Markings for valve functions

Discharge throttle



Marking
(alphabetical code)

C