

# Worm thread hose clamp

stainless steel (W 5), »blow line« series

**EASY**

Art. No. 115483

Type No. 158 R-ES-12



Exemplary illustration

## Technical data

Material	Stainless steel 1.4401 (W5)
Hexagon-head screws	Steel, chrome plated (chromium III), a/f 7
Band width	12.0 mm
Clamping range	90 - 110 mm

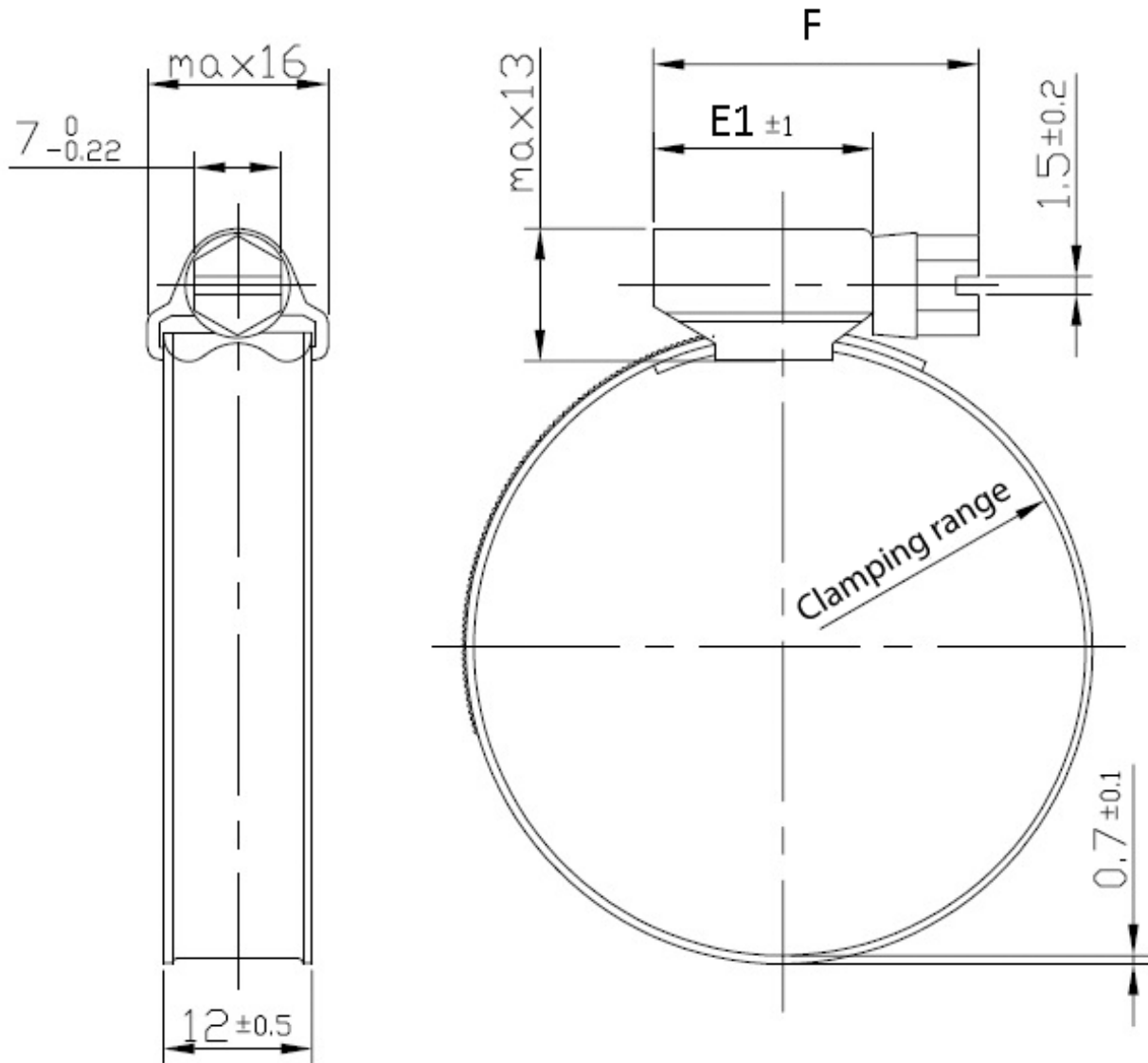
## Commercial data

Customs tariff number	73269098
Country of origin	CN
eCl@ss 5.1.4	27294208
eCl@ss 9.0	27294208
UNSPSC_Code_v190501	31162906
UNSPSC_CodeDesc_v190501	Hose or pipe clamps

## Material informations

REACH SVHC1 substance name	no
CAS no. SVHC 1	no CAS No.
RoHS materials notice	RoHS compliant
REACH Info	no SVHC substance included

## Dimensions



Clamping range	E1	F	Break torque	Installation torque
mm	mm	mm	Nm	Nm
90 - 110	23.0	35 max.	$\geq 6,0$	5