

Worm thread hose clamp

stainless steel (W 5), »blow line« series

EASY

Art. No. 115447

Type No. 158 D-ES-12



Exemplary illustration

Technical data

| | |
|---------------------|--|
| Material | Stainless steel 1.4401 (W5) |
| Hexagon-head screws | Steel, chrome plated (chromium III), a/f 7 |
| Band width | 12.0 mm |
| Clamping range | 16 - 25 mm |

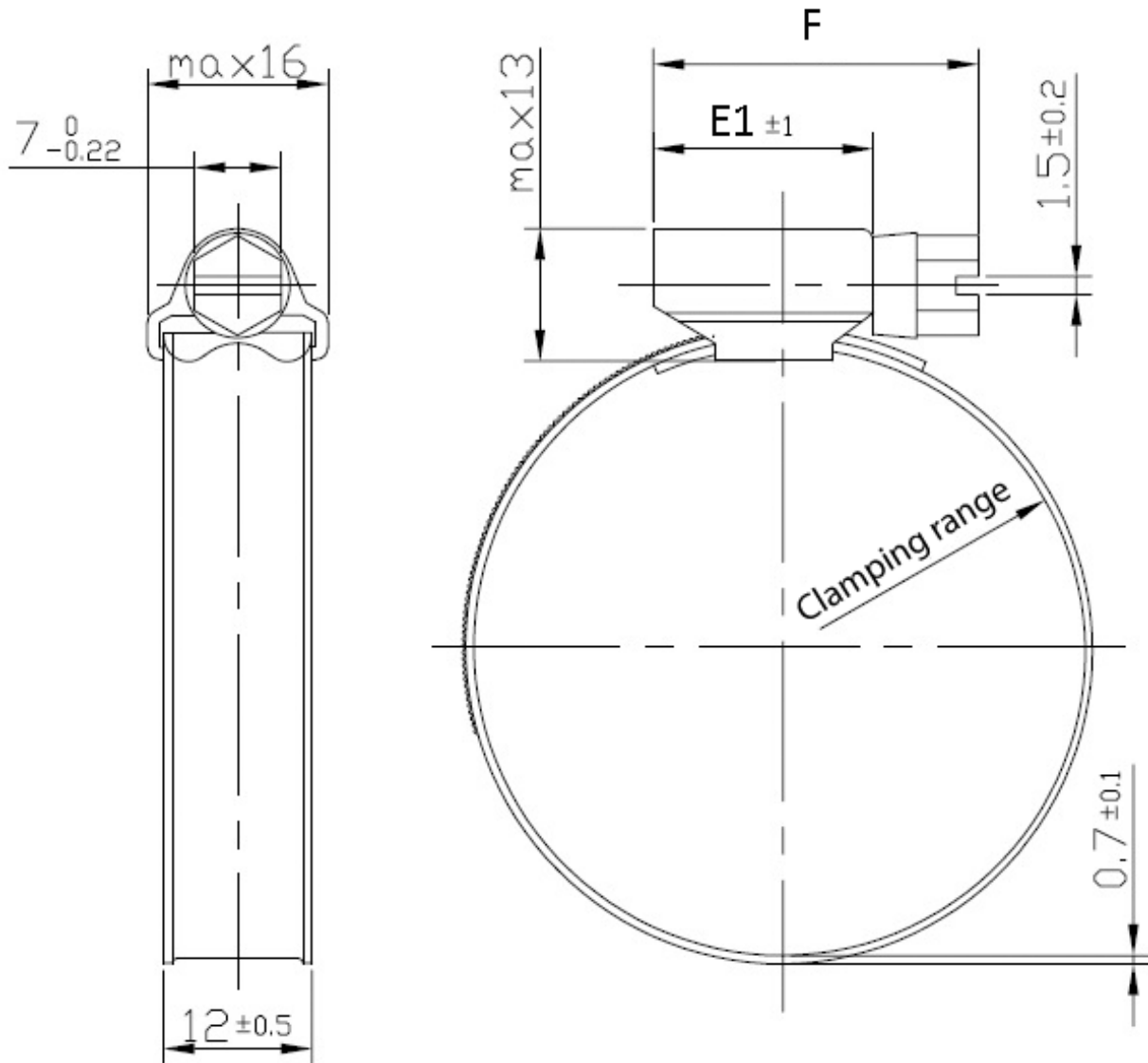
Commercial data

| | |
|-------------------------|---------------------|
| Customs tariff number | 73269098 |
| Country of origin | CN |
| eCl@ss 5.1.4 | 27294208 |
| eCl@ss 9.0 | 27294208 |
| UNSPSC_Code_v190501 | 31162906 |
| UNSPSC_CodeDesc_v190501 | Hose or pipe clamps |

Material informations

| | |
|----------------------------|----------------------------|
| REACH SVHC1 substance name | no |
| CAS no. SVHC 1 | no CAS No. |
| RoHS materials notice | RoHS compliant |
| REACH Info | no SVHC substance included |

Dimensions



| Clamping range | E1 | F | Break torque | Installation torque |
|----------------|------|---------|--------------|---------------------|
| mm | mm | mm | Nm | Nm |
| 16 - 25 | 17.8 | 28 max. | $\geq 6,0$ | 5 |