

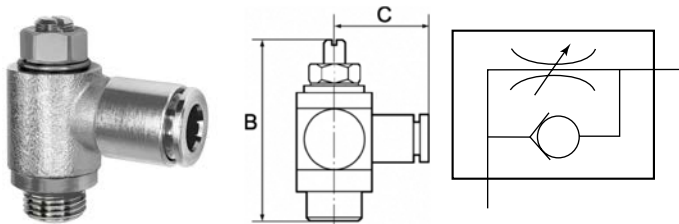
# Throttle check valve

adjustable with slotted-head screwdriver

**PLUS**

Art. No. 112978

Type No. 342.014-8-D



Exemplary illustration

For throttling flow rates and regulating the piston speed of cylinders. Small dimensions, ideal for tight spaces. To be screwed directly into the valve or cylinder. The set flow rate can be locked via the lock nut in the version with knurled screw. The variants in banjo bolt construction can be rotated during assembly and are fixed after tightening. The variants with plug-in connector, rotated can also be rotated freely after assembly. The seals and lubricants used are silicone-free.

## Technical data

Operating pressure	0 - 10 bar
Temperature range	-20 to 80 °C
Body	Nickel-plated brass
Sealant	NBR
Silicone-free	Yes
Function	Supply air throttle (V)
Type of connection	Plug-in connector
Design	rotating
Thread	G 1/4
For hose	8 mm
a/f	10 mm
B	39.5 mm
C	24.5 mm

## Commercial data

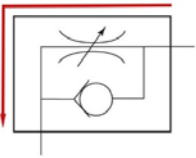
Customs tariff number	84812090
Country of origin	IT
eCl@ss 5.1.4	27292203
eCl@ss 9.0	27292203
UNSPSC_Code_v190501	40141603
UNSPSC_CodeDesc_v190501	Pneumatic valves

## Material informations

REACH SVHC1 substance name	lead
CAS no. SVHC 1	7439-92-1
RoHS materials notice	RoHS compliant
REACH Info	contains SVHC substance

## Markings for valve functions

### Supply air throttle



Marking  
(alphabetical code)

V