

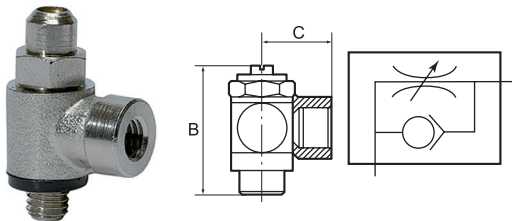
Throttle check valve

adjustable with slotted-head screwdriver

PLUS ||

Art. No. 106921

Type No. 358.014-1/4



Exemplary illustration

For throttling flow rates and regulating the piston speed of cylinders. Small dimensions, ideal for tight spaces. To be screwed directly into the valve or cylinder. The set flow rate can be locked via the lock nut in the version with knurled screw. The variants in banjo bolt construction can be rotated during assembly and are fixed after tightening. The variants with plug-in connector, rotated can also be rotated freely after assembly. The seals and lubricants used are silicone-free.

Discontinued product. No longer available. New product 106945 (333.014-1/4)

Technical data

Operating pressure	0 - 10 bar
Temperature range	-20 to 80 °C
Body	Nickel-plated brass
Sealant	NBR
Captive seals	polyamide glass fibre-reinforced (only parts in banjo bolt construction)
Silicone-free	yes
Function	Discharge throttle (C)
Type of connection	screw connection
Design	Banjo bolt construction
Thread	G 1/4
Connection	G 1/4 IT
a/f	17 mm
B	40.0 mm
C	22.0 mm

Commercial data

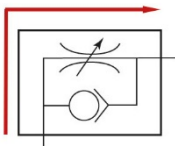
Customs tariff number	84813099
Country of origin	IT
eCl@ss 5.1.4	27292203
eCl@ss 9.0	27292203
UNSPSC_Code_v190501	40141603
UNSPSC_CodeDesc_v190501	Pneumatic valves

Material informations

REACH SVHC1 substance name	lead
CAS no. SVHC 1	7439-92-1
RoHS materials notice	RoHS compliant
REACH Info	contains SVHC substance

Markings for valve functions

Discharge throttle



Marking
(alphabetical code)

C