

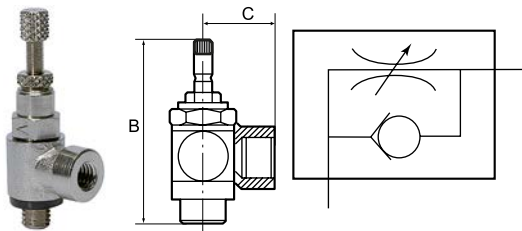
Throttle check valve

adjustable with knurled screw

PLUS

Art. No. 106900

Type No. 339.014-1/4



Exemplary illustration

For throttling flow rates and regulating the piston speed of cylinders. Small dimensions, ideal for tight spaces. To be screwed directly into the valve or cylinder. The set flow rate can be locked via the lock nut in the version with knurled screw. The variants in banjo bolt construction can be rotated during assembly and are fixed after tightening. The seals and lubricants used are silicone-free.

Technical data

| | |
|--------------------|---|
| Operating pressure | 0 - 10 bar |
| Temperature range | -20 to 80 °C |
| Body | Nickel-plated brass |
| Sealant | NBR |
| Captive seals | Polyamide, glass fibre-reinforced (only parts in banjo bolt construction) |
| Silicone-free | Yes |
| Function | Supply air throttle (V) |
| Type of connection | Screw connection |
| Design | Banjo bolt construction |
| Thread | G 1/4 |
| Connection | G 1/4 female thread |
| a/f | 17 mm |
| B | 51.0 mm |
| C | 22.0 mm |

Commercial data

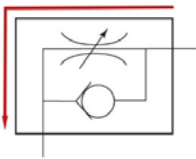
| | |
|-------------------------|------------------|
| Customs tariff number | 84812090 |
| Country of origin | IT |
| eCl@ss 5.1.4 | 27292203 |
| eCl@ss 9.0 | 27292203 |
| UNSPSC_Code_v190501 | 40141603 |
| UNSPSC_CodeDesc_v190501 | Pneumatic valves |

Material informations

| | |
|----------------------------|-------------------------|
| REACH SVHC1 substance name | lead |
| CAS no. SVHC 1 | 7439-92-1 |
| RoHS materials notice | RoHS compliant |
| REACH Info | contains SVHC substance |

Markings for valve functions

Supply air throttle



Marking
(alphabetical code)

V